

The first
ergonomic
school compass
that has everything on hand!

NEW

Available
from March
2021



For smart
beginnings

www.pelikan.com

Never before has the start of constructing as easy and comfortable as with the **griffix[®] Pelikan school compass**: an allround well-thought-out solution with clever extras for precise work and safe transport!

We accompany geometry beginners actively in their start into the world of circles, shapes and perspectives.

The first
ergonomic
school compass
that has everything on hand!

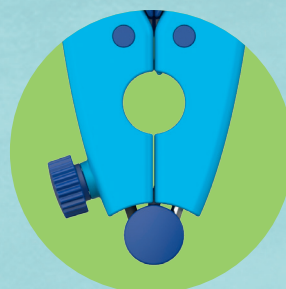
1 Design

- Child-friendly shape **without edges** and spikes
- Particularly suitable for **beginners**
- Exceptional **design** with stable double legs
- Haptically pleasant, **slip-resistant surface**
- Pelikan - own, individual, protected design



2 Transport

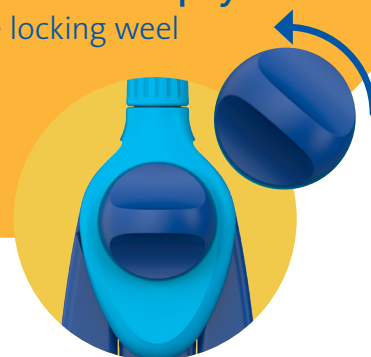
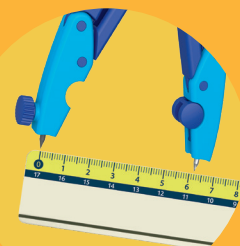
- Small and compact with only **150mm** length – **perfect for transporting**
- **Tip protection** for transport – metal tip and graphite lead are well protected during transport in pencil cases



NEW

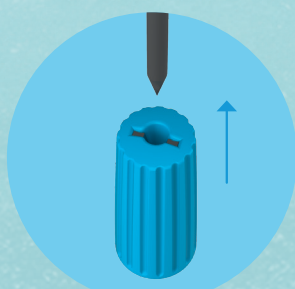
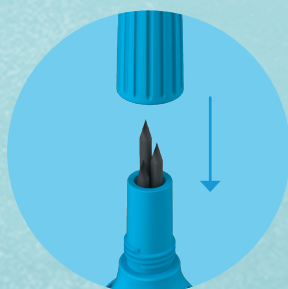
3 Precision

- Vertical lead and center point guide in every angle setting
- Due to the pre-set stiffness of compass legs and the parallelogram principle – measurements are **accurate to the millimeter**
- The compass' **re-adjustment is child's play** with the help of the large locking wheel



4 Inner values

- **Integrated spare lead depot** (3 leads, grade H) in the handle - no extra lead box required
- **Unique sharpening option** for the lead inside the handle



For smart beginnings

griffix® school compass

The griffix® school compass as a new, important member of the successful **griffix® family** actively supports children in their start in the world of construction.

Thanks to the clever solution, parents can be sure that their child will enjoy learning and discovering **from the first geometry lesson.**

Available
from March
2021

NEW

Packaging varieties:



Folding box with Euro hole






Loose item with label



9 pieces in standard display

Dimensions: (W x H x D): 14,5 x 26,5 x 10,5 cm

Item no. EAN	Color code	Item code	Item description	Delivery unit	Warehouse unit	Price for	RRP in €
School compass griffix							
Display							
604 604			Display, 9 pieces school compass griffix content:	NEW 1 PAK	1 PAK	PAK	
700 887		GZ	School compass griffix blue	9 pc		pc	11,99
Folding box							
700 887		GZ	School compass griffix, blue, loose in folding box, 3 pieces	NEW 3 pc	210 pc	pc	11,99
Folding box with Euro hole							
700 818		GZ	School compass griffix, blue, loose in hanging box	NEW 4 pc	80 pc	pc	11,99